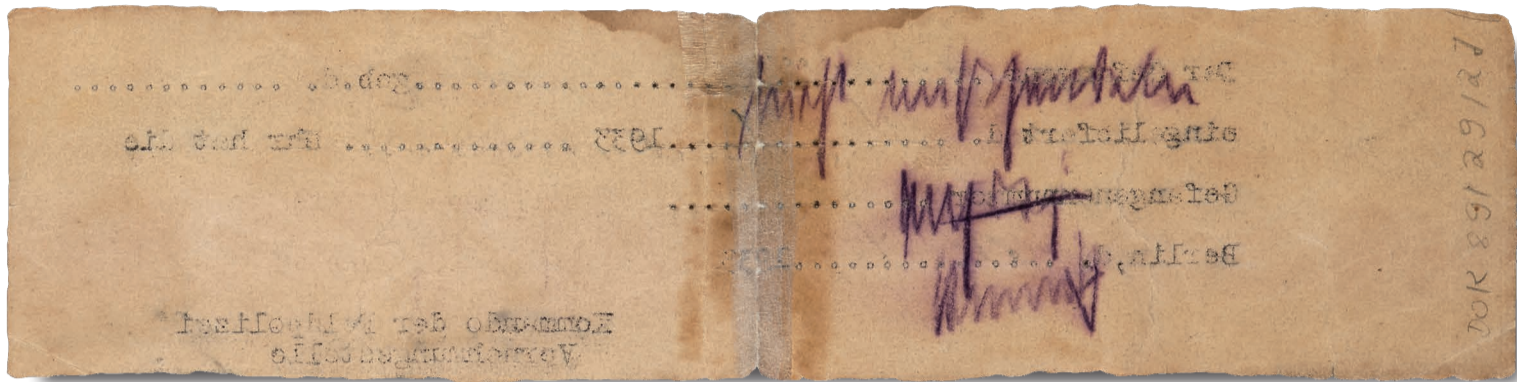


Werner-Voß-Damm 54A
12101 Berlin

+49 (0)30-90277-6163
gedenkort@ba-ts.berlin.de
www.gedenkort-papestrasse.de

MEMORIAL

SA PRISON PAPESTRASSE



The words "Do not mishandle", written on the control slip of Dr. Erich Simenauer, protected the physician from maltreatment during his detention in the SA Prison.

From March to December 1933 an early concentration camp run by the SA Field Police was located in the former barracks of the Prussian Railway Regiments.

Today the building is the only historical site of early National Socialist terror in Berlin where traces of this terror from the year 1933 are still in evidence. The rooms that were used as prison cells are largely preserved in their original condition. There are still drawings, notations of dates and individual words on the walls from that time.

Opening hours

Tuesday, Wednesday, Thursday, Saturday and Sunday
from 1 to 6 pm

Free guided tours are offered upon request.

For group visits outside of opening hours please contact us at gedenkort@ba-ts.berlin.de.

Admission free



MEMORIAL

SA PRISON PAPESTRASSE

Documentation exhibition

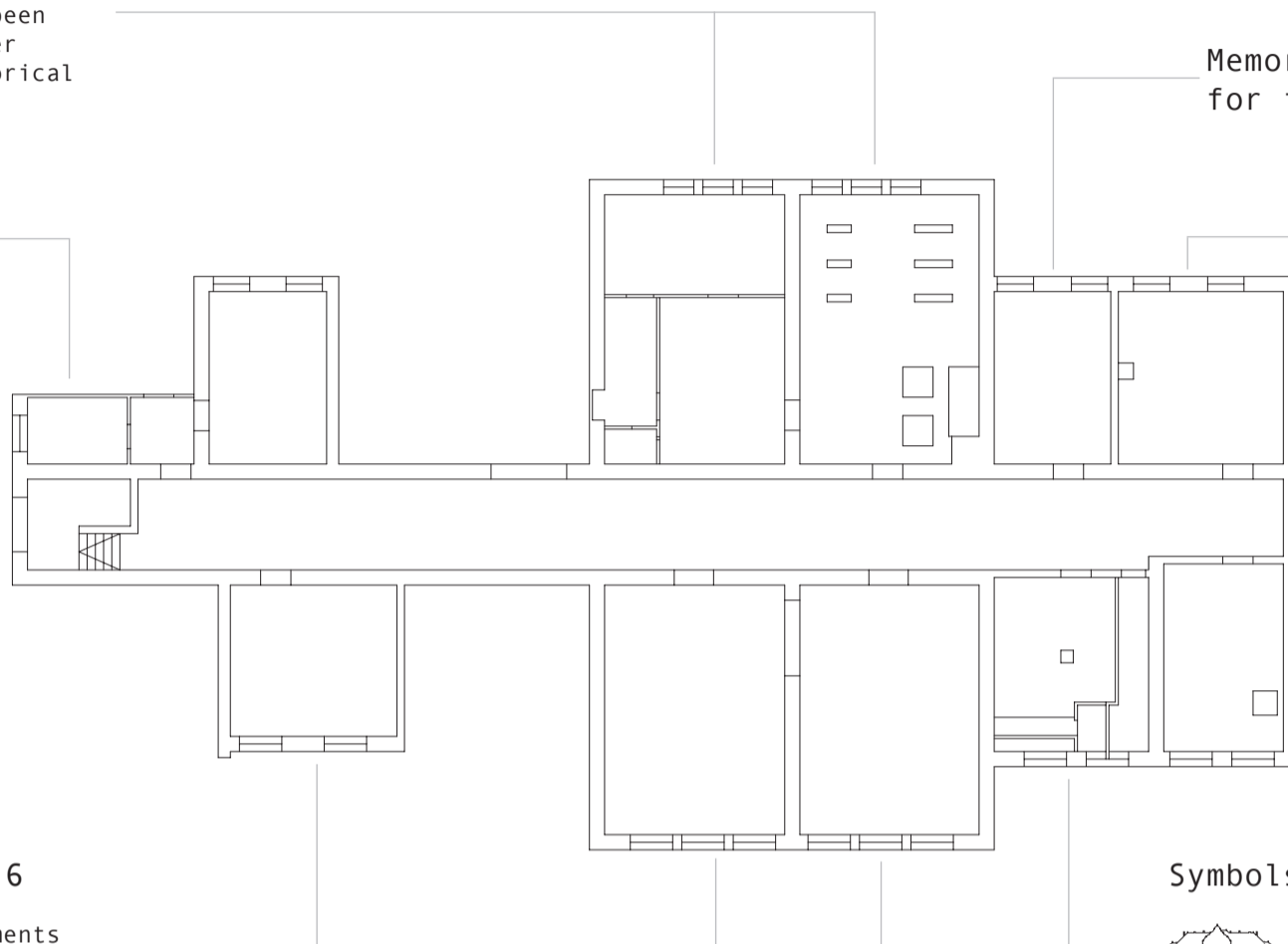
Information panels in the basement rooms that have meanwhile been restructured provide further information about the historical background.

Visitors' WC

Entrance

Memorial room
for the victims who died




Archive



Prison cells 2, 4/5, 6

Historical photos and documents help to explain what took place in the rooms formerly used as prison cells.

Symbols of the exhibition

-  Building history
-  Audio station
-  Archive

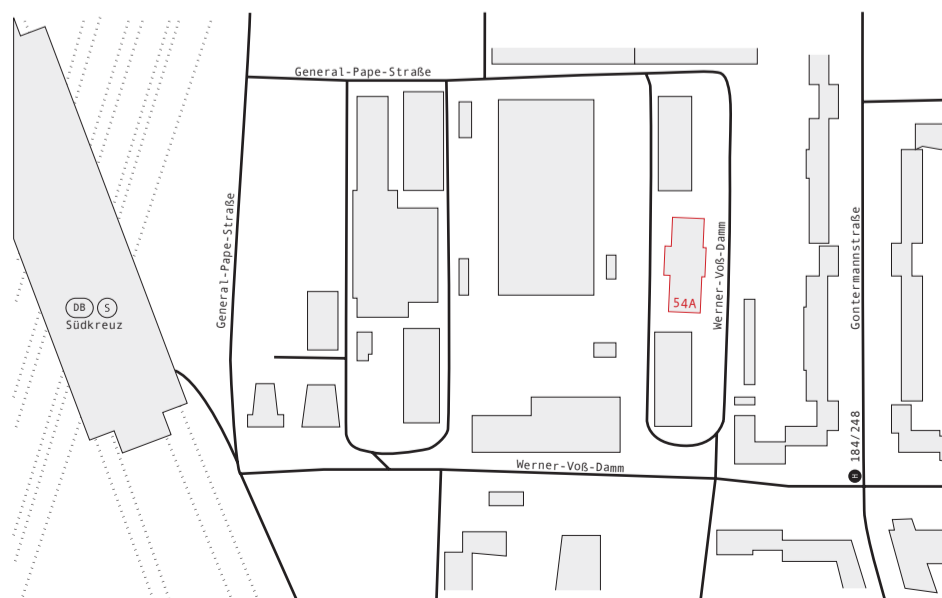
On the exhibition

The permanent exhibition offers visitors the opportunity to approach the history of the site step by step. The occurrences in the early concentration camp are explained and the traces made legible by means of historical sources, commentaries and recorded documents. At the same time the exhibition offers the possibility of an in-depth examination of the early crimes of National Socialism.

Programmes for schools

Complementary to the permanent exhibition, the memorial offers various educational programmes for schools and youth groups. In-depth didactical publications on the history of the SA Prison are available free of charge as a follow-up to the tours and project days.

Those interested can contact us at gedenkort@ba-ts.berlin.de



An institution

of the District Council Tempelhof-Schöneberg
Department of Education, Culture and Social Affairs
Tempelhof-Schöneberg Museums

+49 (0)30-90277-6163
museum@ba-ts.berlin.de

The memorial has come about through years of civic engagement by the History Workshop Papestrasse and the Friends of the Papestrasse Memorial e.V. Together with the assistance of the district of Tempelhof-Schöneberg, the Land Berlin and the federal government the memorial can now be made accessible to the public on a permanent basis.

The exhibition was generously supported by funds from the Stiftung Deutsche Klassenlotterie Berlin.